

# CONSTRUCTION NOTICE

## Valley Line West LRT Water Utility Relocations in Glenora Stony Plain Road – 126 Street to 136 Street

### PROJECT OVERVIEW

As part of the Valley Line West LRT project, EPCOR is responsible for relocating all existing power, water and drainage utilities to avoid potential conflicts with the Valley Line West LRT infrastructure. This is the second stage of the Valley Line, an urban-style 27km line that will operate between Mill Woods in southeast Edmonton and Lewis Farms in west Edmonton. This notice is about water main relocations required in your neighbourhood

### SCHEDULE

Construction will begin in May and is expected to be completed by the end of July 2020, weather permitting. The typical hours of construction will be 7:00 a.m. to 9:00 p.m. Monday to Saturday. If required, these hours may be extended, and construction may occur on Sundays from 9:00 a.m. to 7:00 p.m.

We will comply with the City of Edmonton's Community Standards Bylaw for Noise Control. If it's necessary to temporarily exceed acceptable noise levels, we will work with the City of Edmonton to obtain the necessary permits.

EPCOR will provide an additional notice to residents and businesses adjacent to construction activities. This notice will include more specific details about construction impacts, contact information for questions or concerns related to construction activities and updated timing.

### PROJECT IMPACTS

The maps on the following pages show the approximate location of each work site for this project. A description of each work site is provided. EPCOR has also provided notice to residents about ongoing work on drainage infrastructure in the area. We will coordinate the water main relocations with this work to minimize impacts (such as traffic) to customers in the area.

#### General Construction Impacts

- Depending on the work location, residents and businesses can expect to see activity that is typical to construction, including company/contractor vehicles and equipment.
- Road/lane and sidewalk closures should be anticipated. Signage will indicate closures and detours.
- Most of EPCOR's construction will be completed by contractors through open-trench excavation resulting in traffic and parking restrictions.
- We will work with the City of Edmonton to relocate bus stops as needed.
- Signage will be used to manage traffic and notify pedestrian/cyclists of any necessary detours.
- For road closures or lane reductions, signage will be placed prior to any work starting. Traffic flow will be maintained where possible.
- The construction area will be fenced and/or marked as a restricted area.
- Customers will receive a notification if they will experience temporary water impacts as a result of construction. If temporary impacts to water services are required, the notice will also outline how EPCOR will provide water to customers during this period.

## Construction Restoration

- While the newly installed watermain undergoes all quality assurance testing, new gravel base will be placed and tested. Upon meeting City of Edmonton specifications, asphalt will be placed typically within one to two weeks of final testing
- In most cases, our contractors will temporarily restore and re-open the road to traffic until the City of Edmonton is ready to complete the permanent restoration of the road/sidewalk.
- All affected landscaping, pavement, sidewalks, and alleyways will be restored to their original condition.
- Restoration will take place between September and October, as weather permits.

## COMMONLY USED TERMS

### Open-Trench Excavation

Crews use a pavement saw to cut a trench in the pavement and excavate the trench. The pavement and excavated material is removed by an excavator and loaded into dump trucks.

Pipes are lowered into and installed in the trench. Once installed the trench is backfilled with a mixture of cement, sand and water. Where vibratory compaction is not possible, a cement type product will be used for backfill. The area will then be paved and re-opened to traffic, however the area may be temporarily paved to facilitate reopening of the roadway before permanent paving is completed.

Open-trench construction requires a large trenched area and will require road and/or sidewalk closures. There is often a laydown area associated with the site, which may also cause road and/or sidewalk closures, or disrupt a greenspace area which may be used for public recreation.

### **Other impacts of open cut work include but are not limited to:**

- Construction noise
- Hauling route for trucks on public streets/heavy traffic on roadways to construction site
- Parking – crew vehicles parked near the construction site

## WATER MAIN RELOCATIONS

Once the construction area is excavated and there is no longer pressured water travelling through the section of pipe to be relocated, EPCOR works to install a new section of pipe to meet the alignment required to accommodate the underground LRT infrastructure. This new section of water infrastructure is then connected to the existing water main and the pressured flow is re-established, after the proper testing and quality assurances takes place. Customers will be provided with a pressurized temporary water connection in the event of an extended water outage.

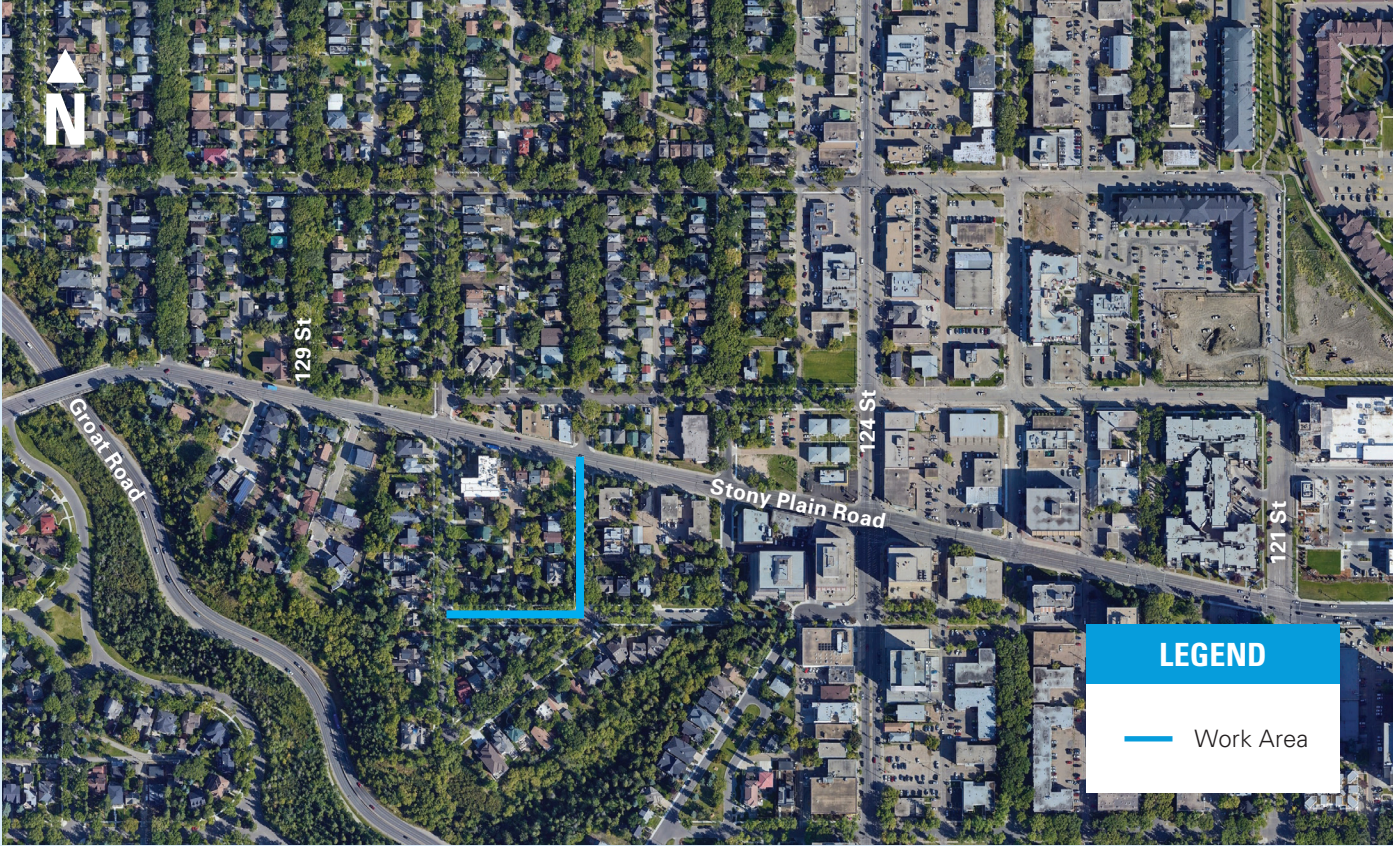
## FIRE HYDRANT RELOCATIONS OR ADDITIONS

After excavation, EPCOR also installs new water hydrants in areas where a different location is required to connect to the new water main infrastructure and improve/increase fire protection within the area.

## COVID-19

EPCOR is closely monitoring our work related to the COVID-19 pandemic. Protocols are in place to protect the health of customers and our employees and teams while they perform essential work. We ask homeowners to please keep a safe two-metre distance from our crews.

# WORK AREA 1: WATER MAIN RELOCATION – 126 STREET SOUTH OF STONY PLAIN ROAD



**Construction start:** April 2021

**Duration:** Approximately five weeks

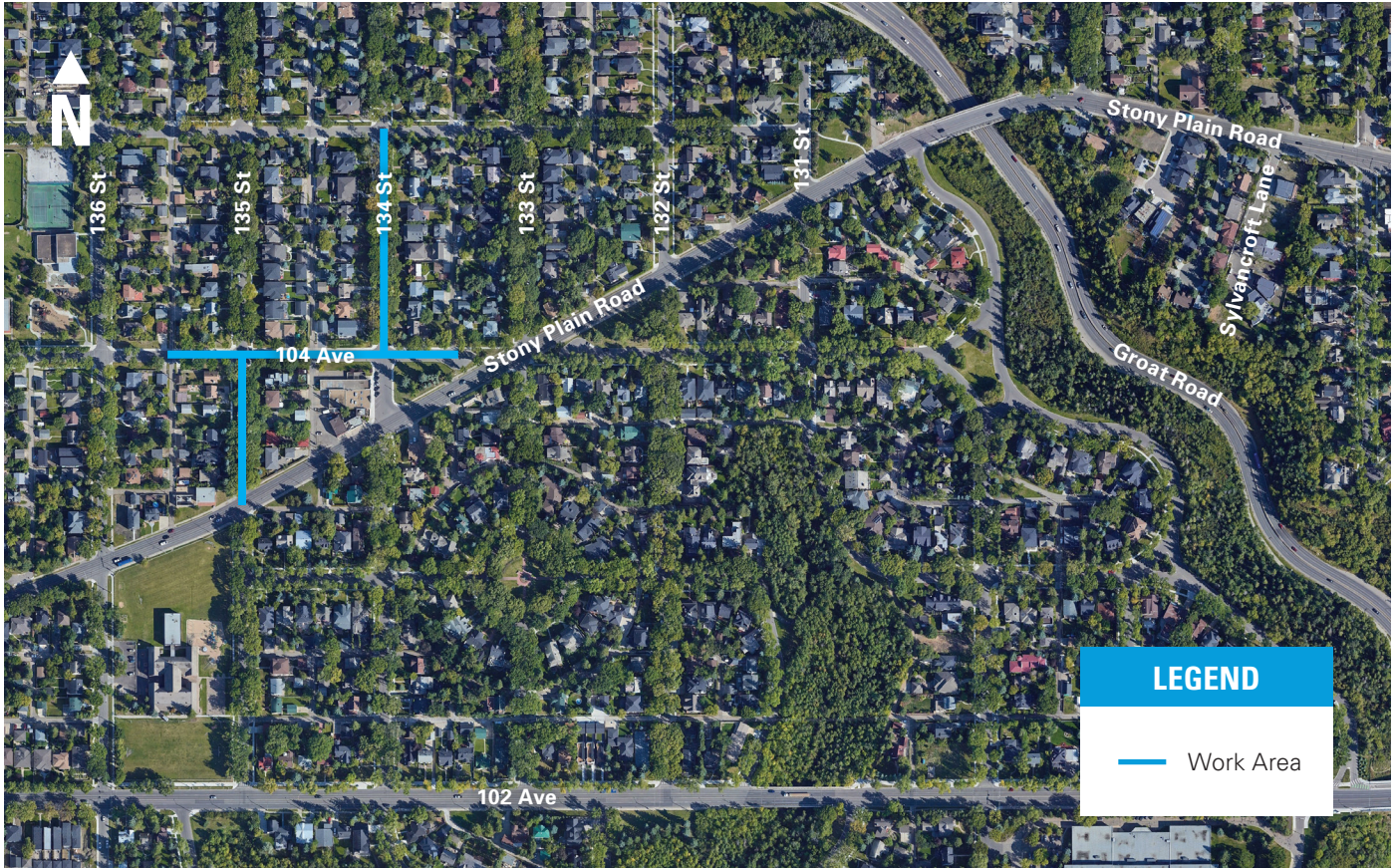
Construction will occur in a staged process in the areas shown on the map above. Currently, EPCOR anticipates that construction will start south of Stony Plain Road and 126 Street.

To complete this work, EPCOR requires a full closure of 126 Street. Signage will be posted in the area to notify commuters of traffic impacts. This closure will also affect the intersection 126 Street and 104 Ave. More detailed information about this closure will be provided prior to construction.

Residents will be able to access their properties through other residential streets.

*Construction timelines could change based on ground conditions encountered during excavation, weather or other factors. The additional notice provided by EPCOR prior to construction will include updated timelines.*

## WORK AREA 2: WATER MAIN RELOCATIONS - 132 STREET TO 136 STREET



**Construction start:** April 2021

**Duration:** Approximately 10 weeks

Construction will occur in a staged process in the areas shown on the map above. Currently, EPCOR anticipates that construction will occur in the following sequence:

- Area 1 - Along 104 Ave from lane east of 134 Street moving towards lane east of 136 Street.
- Area 2 - 135 Street and 104 Avenue heading south to Stony Plain Road
- Area 3 - 134 Street and 104 Avenue heading north to 105 Avenue

Construction will move from one area to the next over the ten week construction duration. EPCOR anticipates that we will be working in each area between two to three weeks, which includes the time required for restoration.

There will be full street closures on 104 Ave, 134 Street and 135 Street. Signage will be posted on these roads prior to construction to notify commuters of traffic impacts. Additional information will be provided to customers prior to construction.

EPCOR also anticipates that residents will be able to access their properties through other residential streets.

*Construction timelines could change based on ground conditions encountered during excavation, weather or other factors. The additional notice provided by EPCOR prior to construction will include updated timelines.*

### FOR MORE INFORMATION

#### EPCOR

**Phone:** 780-412-4200

**Email:** [EPCORprojects@epcor.com](mailto:EPCORprojects@epcor.com)

**Website:** [Epcor.com/valleyline](http://Epcor.com/valleyline)