



PROJECT NOTICE

Rossdale Substation Breaker Replacement Project

DECEMBER 2020

A circuit breaker in the Rossdale substation is nearing the end of its useful life and needs to be replaced. The new circuit breaker will be placed in the same location as the old one (as shown on the map on the back page). You are receiving this notice because you are a landowner, occupant or resident near this proposed project.

SCHEDULE

This work is expected to begin winter/spring 2021 and will take approximately 5 weeks to complete.

We anticipate our hours of construction for this project to be Monday to Friday 7:30 a.m. to 5:00 p.m.; however, occasional evening and weekend work may be required.

CONSTRUCTION IMPACTS

Noise

We will comply with the City of Edmonton's Community Standards Bylaw for Noise Control. If it is necessary to temporarily exceed acceptable noise levels, we will work with the City of Edmonton to obtain the necessary permits.

Power Outages

We do not anticipate any planned power outages as a result of this project.

Work Space

All work areas will be maintained in a safe and secure manner. All construction activities will be performed in accordance with the City of Edmonton's bylaws, Occupational Health and Safety requirements and EPCOR's strict health, safety, and environmental procedures and guidelines. We do not anticipate significant ground disturbances as a result of this project.

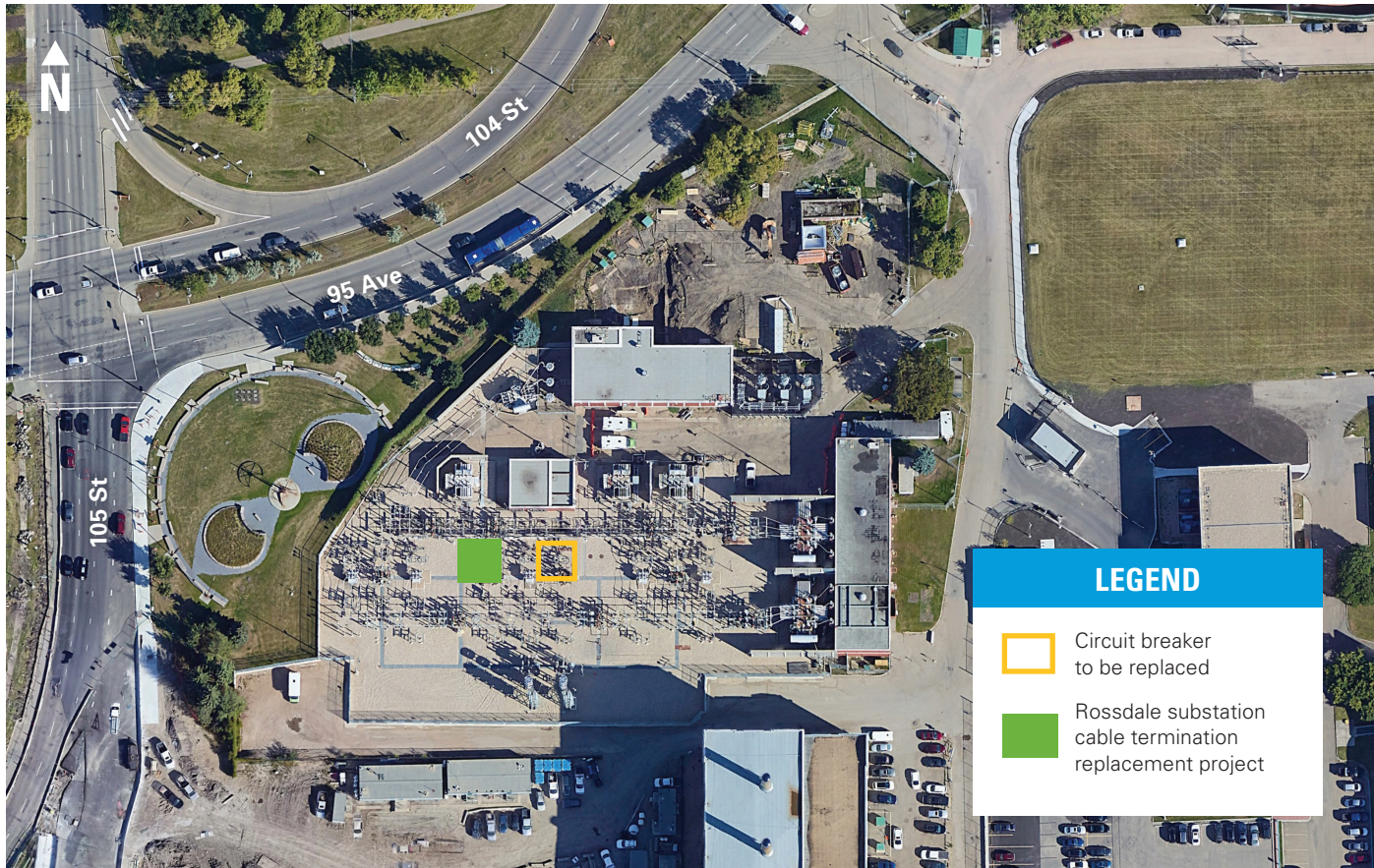
THE ALBERTA UTILITIES COMMISSION (AUC)

Alberta's electric utilities are regulated by the AUC. The AUC is an independent quasi-judicial agency that ensures that the delivery of Alberta's utility service takes place in a manner that is fair, responsible and in the public's interest. EPCOR's electricity projects must be approved by the AUC before construction can begin. For more information about the AUC, please visit the AUC's website (www.auc.ab.ca).

WHAT IS A CIRCUIT BREAKER?

A circuit breaker is an automatically operated electrical switch designed to protect an electrical circuit from damage caused by overload or short circuit.

PROJECT MAP - ROSSDALE SUBSTATION



OTHER PROJECTS IN THE AREA

Rosedale Substation Cable Termination Replacement

A high-voltage cable termination inside the Rosedale Substation is nearing the end of its useful life and needs to be replaced. Substations are a part of the electrical system and are generally connected by two or more high-voltage transmission lines. The Rosedale Substation converts electricity from high-voltage power lines (transmission lines) to lower voltages that can be distributed to homes and businesses in the area. A cable termination is the specific point in the system at which the cable starts or ends. The cable termination being replaced is shown on the map in green.

To complete this project, crews will work 24 hours a day, 7 days a week. This project will require the use of a generator, which will produce noise similar to an idling car.

Information regarding this project was originally sent out in July 2020. Since that time, project timelines have changed. This work is now planned for spring 2021 and will take approximately 6 weeks to complete.

Rosedale Water Treatment Plant Public Workshops

In early December, we held two workshops with residents around the Rosedale Water Treatment Plant to talk about how we can plan our future work at the Rosedale site. Thank you to everyone who joined us at these workshops. We are busy compiling all the feedback, and will send out more information about what we heard in early 2021. The input you provided will be used to guide our work at the Rosedale plant and will continue to be used as we move forward.

CONTACT US

For updates on these projects, please visit epcor.com/Rosedale

For more information or to provide feedback, please contact us:

Phone: (780) 412-3599

Email: waterprojects@epcor.com

