

# Information About the 72 kV Transmission Line

You are receiving this because your property is located near route options for the proposed 72 kV above ground transmission line. This sheet provides additional information on the routing options and technical details.

## TRANSMISSION LINE INFORMATION

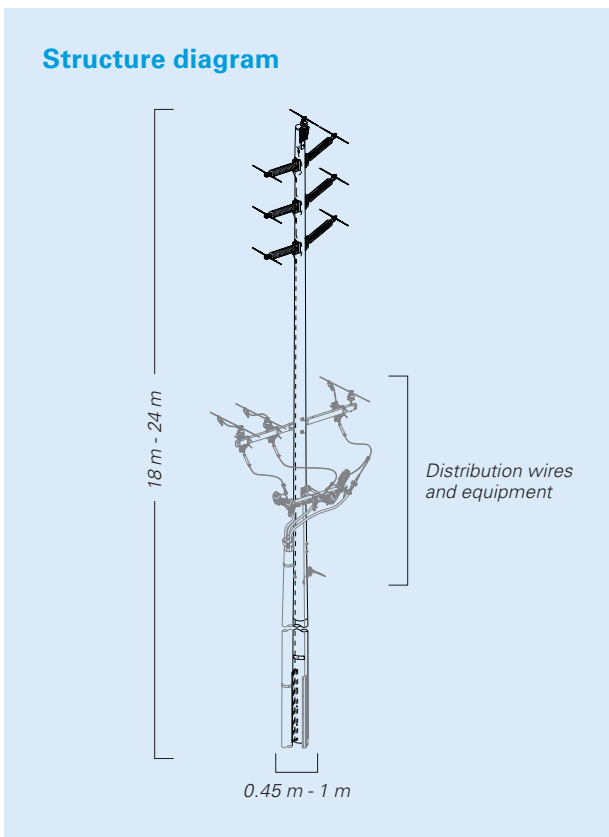
A new 72 kV double circuit above ground transmission line is being proposed to reinforce the electrical transmission system in your area. We have identified a few possible route options to get from the existing Namao Substation (12715- 101 Street) to the proposed new substation site located in Edmonton's Industrial Heights area. Although there are multiple options shown, **only one route will be built**. We need your input to find the best route.

## WHAT WILL IT LOOK LIKE?

If approved, the 72 kV transmission line will be built using mostly composite fiberglass or steel poles ranging in height from approximately 18 to 24 metres. Many of the route options follow existing above ground distribution power lines. In these areas, every second or third distribution pole would be replaced with a transmission pole that has the transmission wires on top and the distribution wires and equipment attached below (as shown on the structure image below).

This will be a double circuit transmission line, meaning it will have six wires strung across the structures and one or two shield wires strung on top. A double circuit transmission line is two transmission lines using mostly one set of structures. This way we can decrease the number of transmission line routes and meet the demand for electricity in the area.

Non-typical structures such as double poles, poles with wider bases, and the use of guy wires may be required at certain locations along the line, including where the line turns corners or has to span longer distances.





# 72 KV TRANSMISSION LINE ROUTE OPTIONS

**Namao Substation**

1

2

3

4

5

6

7

8

9

10

11

12




13

14

15

We are trying to determine the best route from the Namao Substation to the proposed new substation site (shown in blue on the map). The green lines show the many path options we have identified to get from the two points. The numbers in orange are shown as points of reference and will guide conversations to help determine the best route. Even though multiple route options are shown, only one route will be built.

## LEGEND

-  Preliminary 72 kV Route Options
-  Proposed New Substation Site
-  Reference Numbers



## WE WANT YOUR INPUT!

**Phone:** 780-412-8800

**Email:** [CETR@epcor.com](mailto:CETR@epcor.com)



*EPCOR respects your privacy. Any personal information we collect about you, including your name, address, phone number, and e-mail address will only be used in regards to EPCOR projects, including electricity transmission and distribution, natural gas, water and drainage. For more information on EPCOR's Privacy Policy, please visit [epcor.com](http://epcor.com). If you would like to opt out, please contact us at (780) 412-8800 or [CETR@epcor.com](mailto:CETR@epcor.com)*