



Anthem
Community Council
Special Board Meeting

February 22, 2018
6:30 pm

AN IMPORTANT WATER PROJECT IN YOUR AREA

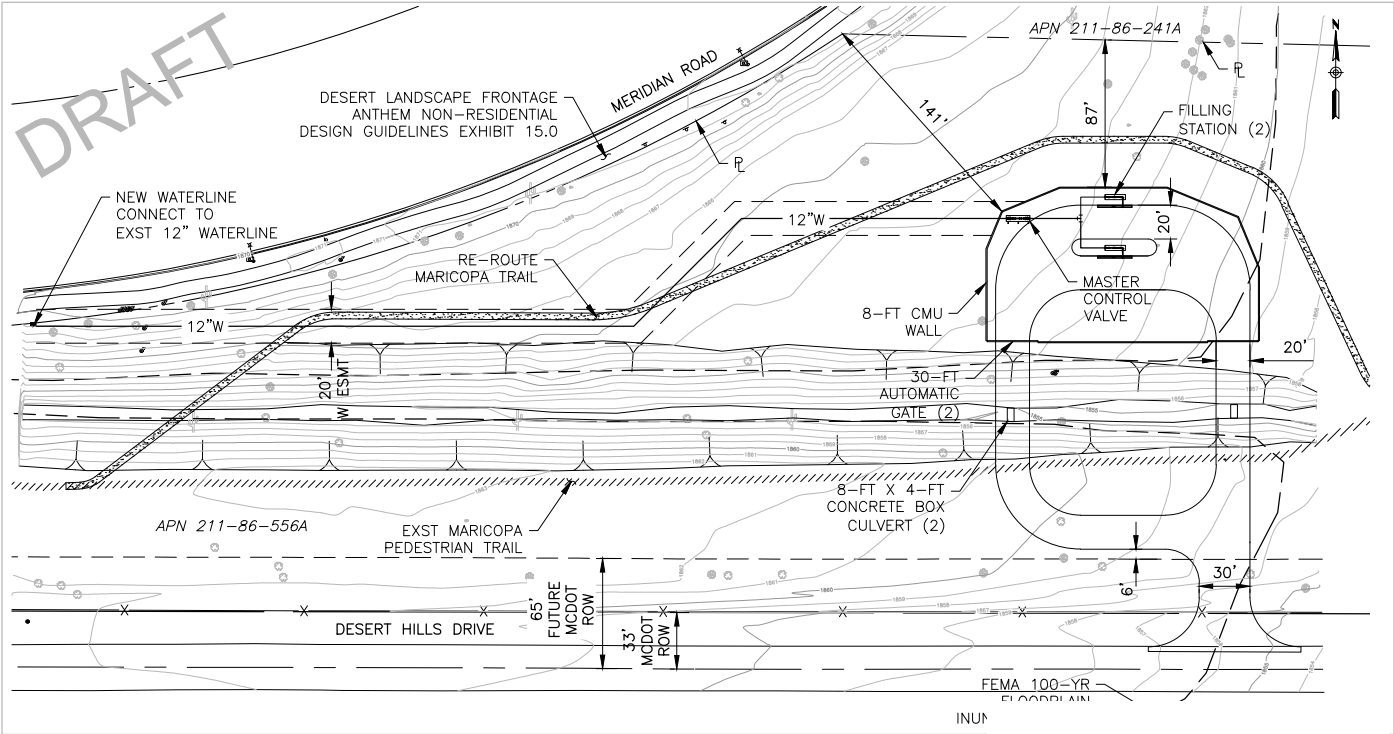
Learn More about How We're Working to Help the Desert Hills and New River Communities

Residents in New River and Desert Hills communities have faced declining water supplies in recent years. The wells these communities rely on are no longer able to provide an adequate supply of water and in some cases, no longer provide water at all. To supplement the declining water supply, residents have relied on water delivered by private water haulers, currently supplied from a municipal fire hydrant. Desert Hills and New River residents have been notified that this source of water will no longer be available to them.

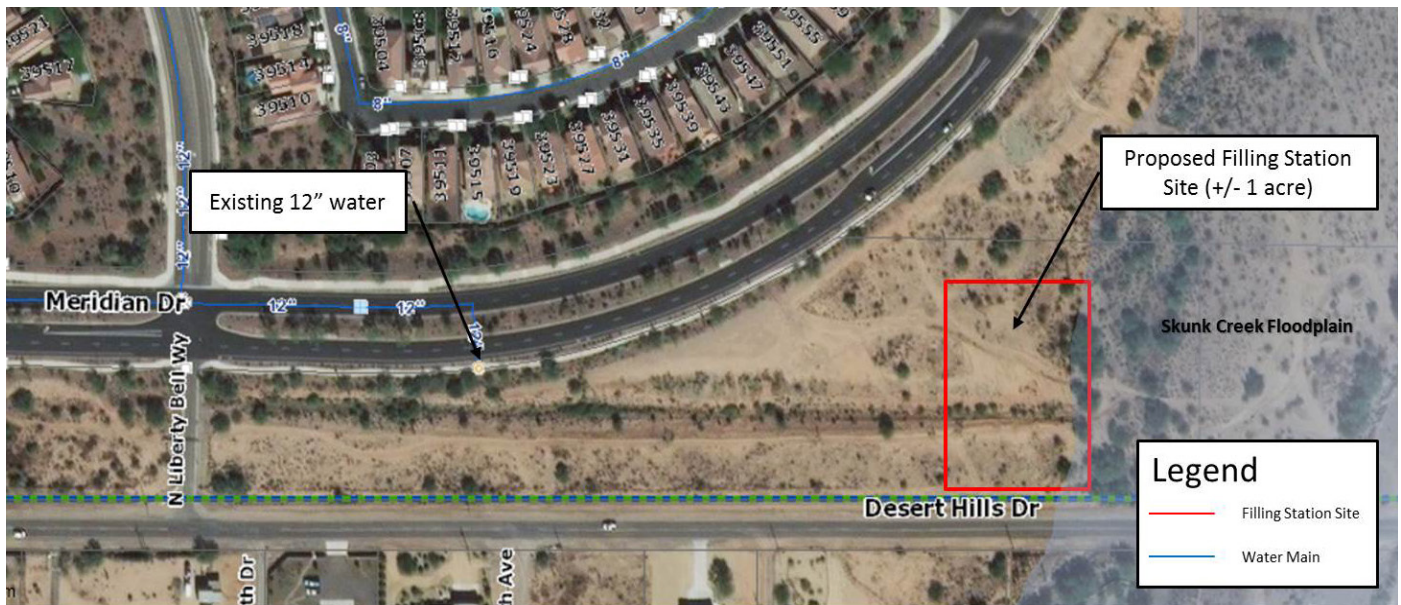
As Anthem's water provider, EPCOR has been asked and has agreed, to explore options to help these neighboring communities by providing a safe and reliable source of water. The best and quickest way to do that is by building a water station accessible to state-licensed water hauling providers and local residents who have established accounts with EPCOR.

What is a water station?

A water station is a location where water haulers can purchase potable water that meets all Federal and State drinking water standards. Trucks would enter and exit the facility from Desert Hills Drive.



Proposed site plan



Where would the proposed station be located?

The station would be located on the north side of Desert Hills Drive, approximately 500 feet east of 17th Avenue, north of the fence between the Anthem and Desert Hills communities.

Will trucks be driving through Anthem?

No, the water station would be accessible to private water haulers from an entrance on Desert Hills Drive only; water-hauling trucks will not be able to access the station from Meridian Drive. Anthem streets may be used *only* if water haulers are servicing their own Anthem customers (e.g. for pool filling).

What about the Maricopa Trail and the Pedestrian Path connecting Anthem and Desert Hills?

The Maricopa Trail is an important part of Maricopa County's public trail system and for Anthem and the surrounding communities. EPCOR will work closely with Maricopa County to ensure that the trail and the pedestrian path continue to be fully accessible.

What will the station's operating hours be? What about noise and dust?

The water station will be fenced to screen it from view, with gates at the paved driveway entrance and exit. The station will be accessible seven days a week, but during daytime hours only. Any site lighting will be appropriate to the low-profile of the structure and Maricopa County and Anthem Community building requirements.

How long will it take to build the water station?

Pending the required approvals from the Anthem Community Council and Maricopa County, design and construction is anticipated to take from 2 to 3 months.

What's Next?

On November 15, 2017, the Anthem Community Council approved EPCOR's request to lease approximately one acre of land. **On February 22, 2018 the Anthem Community Council will consider and possibly vote on EPCOR's proposed site plan and architectural design.**

As a regulated utility, EPCOR's proposal to provide water to water hauling providers is subject to review and approval by the Arizona Corporation Commission. EPCOR's application was approved by the Arizona Corporation Commission on November 17, 2017. You can view a copy of the decision on the Arizona Corporation Commission's website – www.azcc.gov – by searching for Docket #WS-01303A-17-0326 using the eDocket search function.

Questions? Comments?

Attend the Anthem Community Council Board of Directors meeting at the Civic Building, February 22 at 6:30 pm, or send comments to planning@anthemcouncil.com.

You can also contact EPCOR by email at mywater@epcor.com.