

Spring Creek Estates

Pipeline Replacement Project





Safety Focused

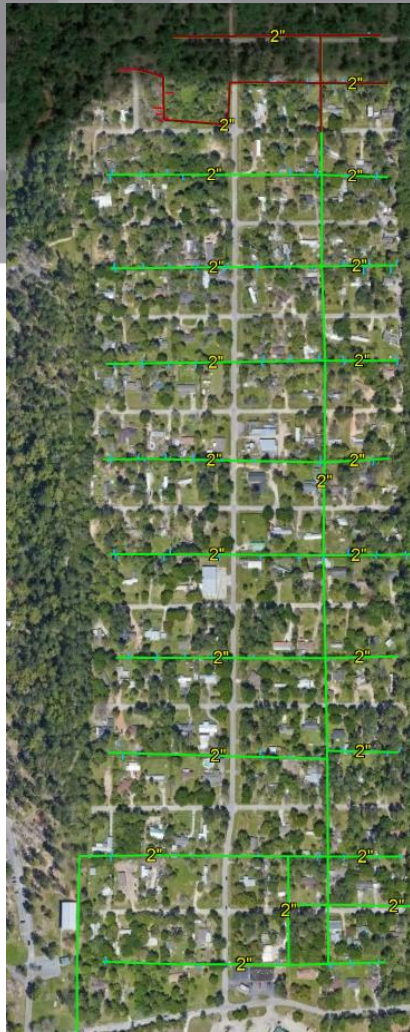
- Texas Railroad Commission
- Replace steel pipelines
 - 8% annually
 - Polyethylene (plastic)
- Spring Creek pipeline installed ~50 years ago

THE PROJECT

Old steel pipeline system



New plastic pipeline system



Project Timeline

- May 2021
 - Started permitting with Harris County
- June 2022
 - Communication to customers
- June-September 2022
 - Pipeline Mains Installed
- October 2022
 - Communication to customers
 - ~40-60 days to connect homes to new pipeline
 - Notified one week in advance (weather permitting)



Your Responsibilities as a Homeowner

- Provide access to your home's meter
 - Please secure pets
- Leak detection safety test
 - Temporary disconnection of service
 - Required to connect home to new pipeline
 - Free diagnosis from Heartland Plumbing
 - Repairs past meter are customer's responsibility

The background of the advertisement is a photograph of a large solar farm. The solar panels are arranged in neat rows and are tilted towards the sun. The sun is low on the horizon, creating a bright, golden glow and casting long shadows. The sky is filled with soft, white clouds. The overall scene is peaceful and highlights the use of renewable energy.

HEARTLAND PLUMBING

281-789-4722

Call within seven days of leak detection test for free diagnosis

THANK YOU

