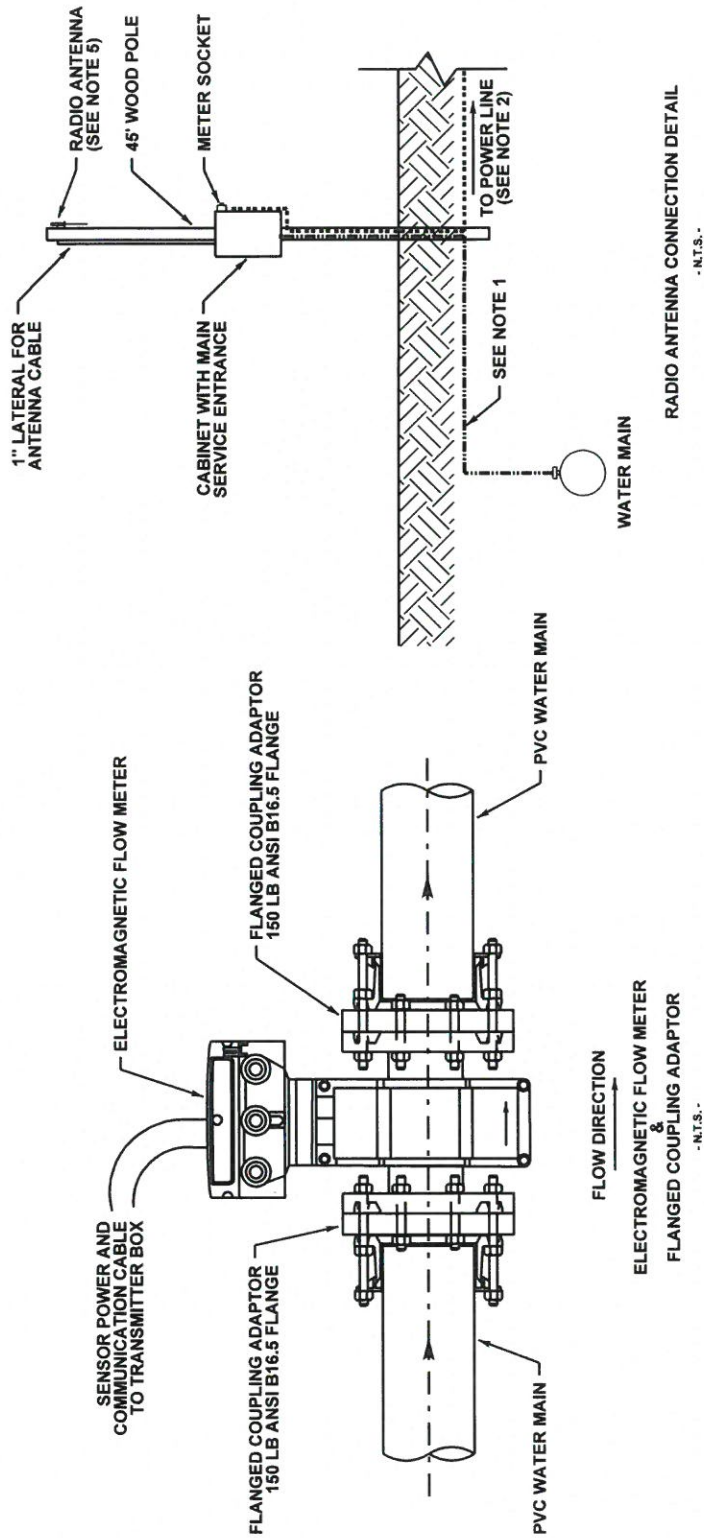


20170215 11:45 cawright 2520-09.dgn



**NOTES:**

1. INSTALL PROMAG SIGNAL CABLE AND COIL IN 2" SEPTACON FROM WATER MAIN TO CABINET POLE LOCATION.
2. INSTALL I-08 BLACK, I-08 RED RWU90, AND I-08 GREEN RWU90 (GCC) IN 2" SEPTACON AND CONNECT TO POWER LINE (POLE OR UNDERGROUND).
3. INSTALL IN ACCORDANCE WITH VOLUME 7 OF THE COE DESIGN & CONSTRUCTION STANDARDS.
4. ALL ELECTRICAL WORK SHALL BE INSTALLED TO THE LATEST REVISION OF THE CANADIAN ELECTRICAL CODE.
5. RADIO ANTENNA TO BE MOUNTED AND POINTED IN DIRECTION AS REQUIRED BY EPCOR WATER SCADA GROUP.

|                       |  |   |              |                |
|-----------------------|--|---|--------------|----------------|
|                       | <b>ELECTROMAGNETIC FLOW METER ASSEMBLY</b> |   |              | DRAWING NUMBER |
|                       | APPROVED<br><b>MARCH 2017</b>              | DRAWN BY<br><b>RM/CW</b>                      | APPROVED<br> | <b>2520-09</b> |
| SCALE<br><b>N T S</b> | CHECKED BY<br><b>David M.</b>              | DIRECTOR, WATER DISTRIBUTION AND TRANSMISSION |              | REVISION 0     |