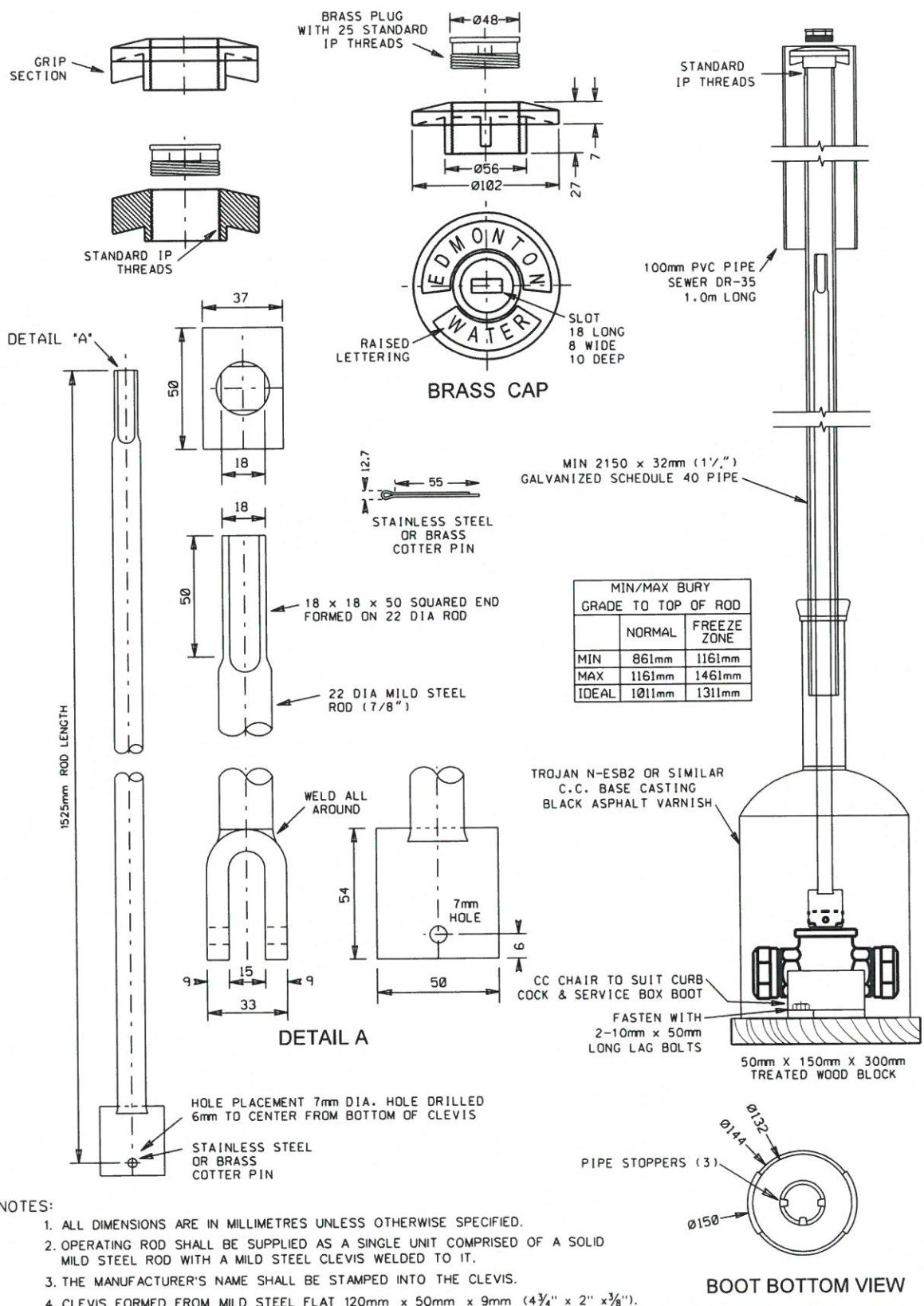


20170215 10:04 cawright 2514-4b.DGN



NOTES:

1. ALL DIMENSIONS ARE IN MILLIMETRES UNLESS OTHERWISE SPECIFIED.
2. OPERATING ROD SHALL BE SUPPLIED AS A SINGLE UNIT COMPRISED OF A SOLID MILD STEEL ROD WITH A MILD STEEL CLEVIS WELDED TO IT.
3. THE MANUFACTURER'S NAME SHALL BE STAMPED INTO THE CLEVIS.
4. CLEVIS FORMED FROM MILD STEEL FLAT 120mm x 50mm x 9mm (4 3/4" x 2" x 3/8").

	<b>SERVICE BOX DETAIL FOR 40mm, 50mm WATER SERVICE (ONE PIECE CASING)</b>		DRAWING NUMBER <b>2514-04b</b>
	APPROVED <b>MARCH 2017</b>	DRAWN BY <b>DV/CW</b>	APPROVED 
SCALE <b>N T S</b>	CHECKED BY <b>Filip D.</b>	DIRECTOR, WATER DISTRIBUTION AND TRANSMISSION	