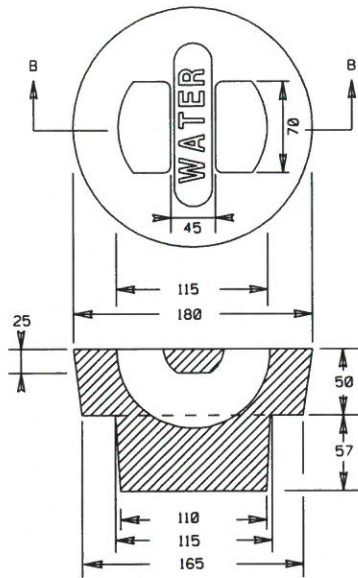


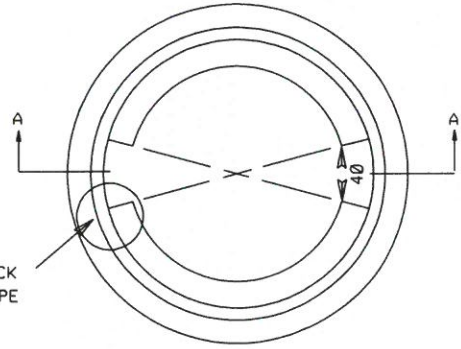
TOP VIEW



CROSS SECTION B - B
PLUG

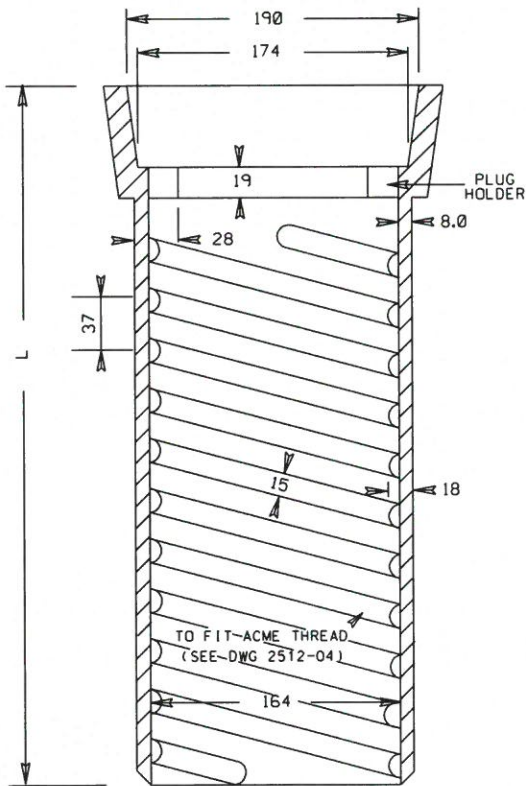
MANUFACTURING TOLERANCES:

- ± 2mm FOR INDICATED CASTING DIMENSIONS OF 190mm OR LESS
- ± 3mm FOR INDICATED CASTING DIMENSIONS OF 191mm TO 280mm
- ± 4mm FOR INDICATED CASTING DIMENSIONS OF 281mm TO 380mm

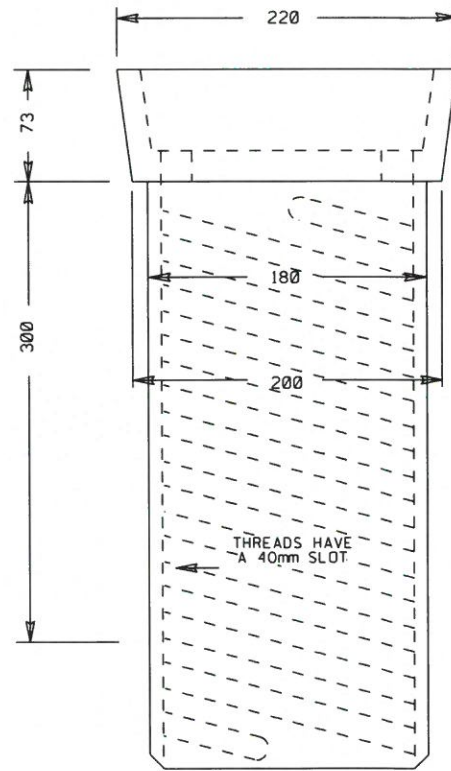


NOTCH CUT BACK
TO WALL OF PIPE

TOP VIEW



CROSS SECTION A - A



ELEVATION

NOTES:

1. ALL DIMENSIONS ARE IN MILLIMETRES UNLESS OTHERWISE SPECIFIED.
2. L (LENGTH) SIZES ARE 600, 900 AND 1200mm.
3. PLUG: DUCTILE IRON TO ASTM 536 GRADE 60-40-18
4. MINIMUM 300mm OF THREADS AVAILABLE FROM TOP SECTION TO BOTTOM SECTION FOR RAISING AND LOWERING.

20170214 15:03 cawright 2512-2.dgn

	VALVE CASING TOP SECTION AND PLUG		
	APPROVED MARCH 2017	DRAWN BY DV/CW	APPROVED
	SCALE N T S	CHECKED BY David M.	DIRECTOR, WATER DISTRIBUTION AND TRANSMISSION
			DRAWING NUMBER 2512-02 REVISION 0