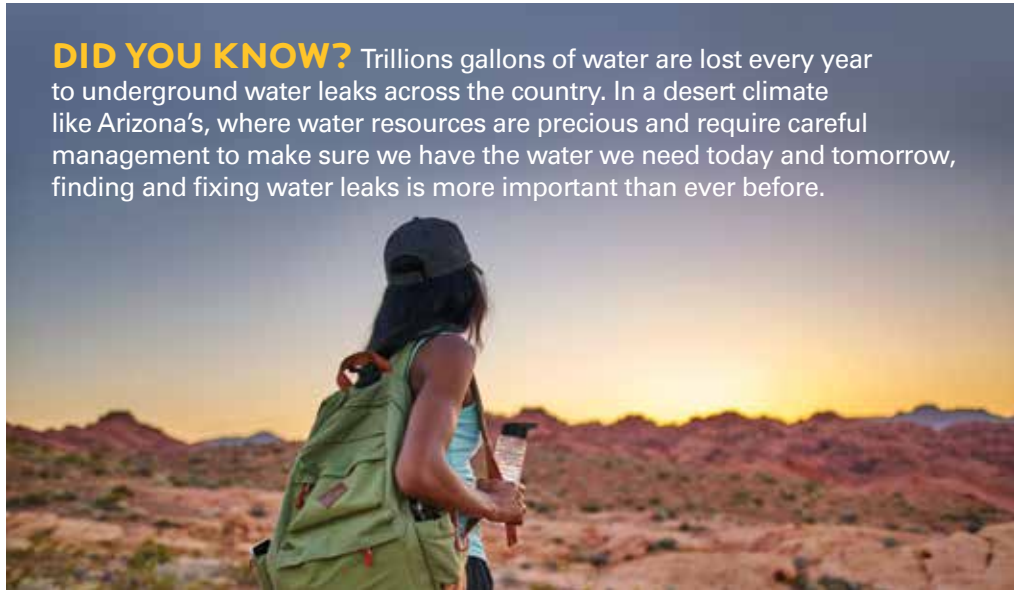


HELPFUL INFORMATION FOR YOU

Providing safe, clean, reliable water and wastewater services is more than connecting a pipe to your home. Keeping your service in top condition, testing water for quality and safety, protecting public health and ensuring your fire department has water are just part of what goes into delivering your family’s service each day.

In April 2022, the Arizona Corporation Commission approved new rates for your water and/or wastewater service*. Effective May 1, 2022, these changes to rates more accurately reflect recent costs to provide safe and reliable service.



DID YOU KNOW? Trillions gallons of water are lost every year to underground water leaks across the country. In a desert climate like Arizona’s, where water resources are precious and require careful management to make sure we have the water we need today and tomorrow, finding and fixing water leaks is more important than ever before.

*Decision #78546, Docket WS-01303A-20-0025. San Tan customers may receive service for water only, wastewater only or both water and wastewater, depending on where they live in the district. This rate review began in 2020 to update rates previously set in 2010.

Average bill impact

Effective 5/1/2022

| | Average Usage in Gallons | Previous Average Bill | New Average Bill | Change to bill |
|-------------------|-----------------------------|--------------------------|---------------------|-------------------|
| Water | | | | |
| 5/8 inch | 5,685 | \$21.60 | \$21.44 | \$(0.17) |
| 3/4 inch | 5,685 | \$27.05 | \$25.95 | \$(1.10) |
| 1 inch | 11,797 | \$52.60 | \$53.79 | \$1.19 |
| Wastewater | | | | |
| 5/8 inch | Flat Rate | \$36.11 | \$42.59 | \$6.48 |
| 3/4 inch | Flat Rate | \$39.24 | \$46.30 | \$7.06 |
| 1 inch | Flat Rate | \$49.27 | \$58.11 | \$8.84 |

Changes to bill do not include CAGR fees, rate case expense surcharge or future sustainable water surcharges.

Note: San Tan does not use 5/8-inch meters. Average usage is based on 3/4-inch customers.

PROTECTING YOU. PROTECTING YOUR WATER.

EPCOR is committed to safe, reliable water service and protecting and preserving our most precious natural resource – water. Every day we test your water to guarantee its safety and we’re focused on making sure every drop is there when you need it for years to come.

San Tan Water Rates Effective 5/1/2022

| Customer Type | Monthly Minimum Charge | Tiers | Volumetric Rates |
|--|------------------------|---|----------------------------|
| Residential 5/8 Inch | \$9.01 | First 4,000 Gallons 4,001 to 10,000 Gallons Over 10,000 Gallons | \$1.99 \$2.65 \$3.65 |
| Residential 3/4 Inch | \$13.52 | First 4,000 Gallons 4,001 to 10,000 Gallons Over 10,000 Gallons | \$1.99 \$2.65 \$3.65 |
| Residential 1 Inch | \$22.53 | First 32,000 Gallons Over 32,000 Gallons | \$2.65 \$3.65 |
| Residential 1 1/2 Inch | \$45.05 | First 88,000 Gallons Over 88,000 Gallons | \$2.65 \$3.65 |
| Residential 2 Inch | \$72.08 | First 156,000 Gallons Over 156,000 Gallons | \$2.65 \$3.65 |
| Residential 3 Inch | \$144.16 | First 339,000 Gallons Over 339,000 Gallons | \$2.65 \$3.65 |
| Residential 4 Inch | \$225.25 | First 545,000 Gallons Over 545,000 Gallons | \$2.65 \$3.65 |
| Residential 6 Inch | \$450.50 | First 1,120,000 Gallons Over 1,120,000 Gallons | \$2.65 \$3.65 |
| Residential 8 Inch | \$720.80 | First 1,800,000 Gallons Over 1,800,000 Gallons | \$2.65 \$3.65 |
| Residential 10 Inch | \$1,036.15 | First 2,600,000 Gallons Over 2,600,000 Gallons | \$2.65 \$3.65 |
| Commercial/Industrial/Irrigation/ Public Authority 5/8 Inch | \$9.01 | First 10,000 Gallons Over 10,000 Gallons | \$2.65 \$3.65 |
| Commercial/Industrial/Irrigation/ Public Authority 3/4 Inch | \$13.52 | First 10,000 Gallons Over 10,000 Gallons | \$2.65 \$3.65 |
| Commercial/Industrial/Irrigation/ Public Authority 1 Inch | \$22.53 | First 32,000 Gallons Over 32,000 Gallons | \$2.65 \$3.65 |
| Commercial/Industrial/Irrigation/ Public Authority 1 1/2 Inch | \$45.05 | First 88,000 Gallons Over 88,000 Gallons | \$2.65 \$3.65 |
| Commercial/Industrial/Irrigation/ Public Authority 2 Inch | \$72.08 | First 156,000 Gallons Over 156,000 Gallons | \$2.65 \$3.65 |
| Commercial/Industrial/Irrigation/ Public Authority 3 Inch | \$144.16 | First 339,000 Gallons Over 339,000 Gallons | \$2.65 \$3.65 |
| Commercial/Industrial/Irrigation/ Public Authority 4 Inch | \$225.25 | First 545,000 Gallons Over 545,000 Gallons | \$2.65 \$3.65 |
| Commercial/Industrial/Irrigation/ Public Authority 6 Inch | \$450.50 | First 1,120,000 Gallons Over 1,120,000 Gallons | \$2.65 \$3.65 |
| Commercial/Industrial/Irrigation/ Public Authority 8 Inch | \$720.80 | First 1,800,000 Gallons Over 1,800,000 Gallons | \$2.65 \$3.65 |
| Commercial/Industrial/Irrigation/ Public Authority 10 Inch | \$1,036.15 | First 2,600,000 Gallons Over 2,600,000 Gallons | \$2.65 \$3.65 |
| Construction (All Meter Sizes) | \$144.16 | All Usage | \$3.65 |
| Effluent | \$0.00 | All Usage | \$0.75 |
| Standpipe | \$0.00 | All Usage | \$3.65 |

San Tan Wastewater Rates Effective 5/1/2022

| Meter Size (All Customer Classes) | Monthly Minimum Charge |
|--------------------------------------|------------------------|
| 5/8 Inch | \$42.59 |
| 3/4 Inch | \$46.30 |
| 1 Inch | \$58.11 |
| 1 1/2 Inch | \$72.25 |
| 2 Inch | \$116.50 |
| 3 Inch | \$462.91 |
| 4 Inch | \$888.70 |
| 6 Inch | \$1,206.07 |
| 8 Inch | \$1,758.05 |
| 10 Inch | \$2,527.71 |



QUESTIONS?

We're here for you.

1.800.383.0834

mywater@epcor.com

www.epcor.com

We are experiencing longer-than-usual call hold times. If you don't have time to hold, try logging in to your account on epcor.com for a variety of self-service options.

DID YOU KNOW? Your water comes from the underground aquifer, a finite resource that must be replenished to help ensure we have water for the future. Water reclamation facilities play an important role here – the wastewater that leaves your home is carefully treated and cleaned to very high standards so that it can be safely returned to the natural water cycle.

San Tan Water

| Description | Current Charge | New Charge | |
|---|----------------|-------------|--|
| Establishment | \$25.00 | \$25.00 | |
| Establishment (After Hours) | \$40.00 | No Tariff | |
| Reconnection (Delinquent) | \$50.00 | \$50.00 | |
| Meter Test | \$25.00 | \$25.00 | |
| Deposit Requirement (Residential Meter) | (a) | (a) | |
| Deposit Requirement (Non-Residential Meter) | (a) | (a) | |
| Deposit Interest | (b) | (b) | |
| Re-Establishment (Within 12 Months) | (c) | (c) | |
| Re-Establishment (After Hours) | (c) | No Tariff | |
| NSF Check | \$15.00 | \$25.00 (d) | |
| Deferred Payment, Per month | 1.50% | 1.50% | |
| Meter Re-Read | \$5.00 | \$5.00 | |
| Charge of Moving Customer Meter (At Customer's Request) | Cost | Cost (e) | |
| After Hours Service Charge | No Tariff | \$40.00 (f) | |
| Late Payment Fee (Per Month) | 1.50% | 1.50% | |

In addition to the collection of regular rates, the utility will collect from its customers a proportionate share of any privilege, sales, or use tax. Per Commission rule A.A.C. 14-2-409(D)(5).

(a) Per A.A.C. R14-2-403(B).

(b) Interest per A.A.C R14-2-403(B).

(c) Monthly minimum charge times number of months off the system. Per A.A.C R14-2-403(D).

(d) Utility may only charge one NSF fee when customers are billed for water and wastewater on one bill.

(e) Per A.A.C. R14-2-405(B).

(f) Per A.A.C. R14-2-405(D).

San Tan Wastewater

| Description | Current Charge | New Charge | |
|---|----------------|-------------|--|
| Establishment | \$25.00 | \$25.00 | |
| Establishment (After Hours) | \$40.00 | No Tariff | |
| Reconnection (Delinquent) | \$50.00 | \$50.00 | |
| Meter Test | \$25.00 | \$25.00 | |
| Deposit Requirement (Residential Meter) | (a) | (a) | |
| Deposit Requirement (Non-Residential Meter) | (a) | (a) | |
| Deposit Interest | (b) | (b) | |
| Re-Establishment (Within 12 Months) | (c) | (c) | |
| Re-Establishment (After Hours) | (c) | No Tariff | |
| NSF Check | \$15.00 | \$25.00 (d) | |
| Deferred Payment, Per month | 1.50% | 1.50% | |
| After Hours Service Charge | No Tariff | \$40.00 (e) | |
| Service Line Connection Charge | \$350.00 | \$350.00 | |
| Main Extension Tariff | Cost | Cost (f) | |
| Off-Site Facilities Hook-Up Fees (See Tariff) | (g) | (g) | |
| Late Payment Fee (Per Month) | 1.50% | 1.50% | |

In addition to the collection of regular rates, the utility will collect from its customers a proportionate share of any privilege, sales, or use tax. Per Commission rule A.A.C. 14-2-608(D)(5).

(a) Residential - two times the estimated average monthly bill. Non-residential - two and one-half times the estimated maximum monthly bill.

(b) Interest per A.A.C R14-2-603(B).

(c) Monthly minimum charge times number of months off the system. Per A.A.C R14-2-603(D).

(d) Utility may only charge one NSF fee when customers are billed for water and wastewater on one bill.

(e) Per A.A.C. R14-2-605(D).

(f) Per A.A.C. R14-2-606(B), except refunds shall be based upon five percent (5%) of gross revenues from bona fide customers, until all advances are fully refunded to Developer.

(g) New wastewater installations. May be assessed only once per parcel, service connection, or lot within a subdivision. Purpose is to equitably apportion the costs of constructing additional off-site facilities.

All advances and/or contributions are to include labor, materials, overheads, and all applicable taxes, including all gross-up taxes for income taxes, if applicable.

Service Line and Meter Installation Charges:

(Refundable Pursuant to A.A.C. R14-2-405)

Current Proposed Charges

| | Service Line | Meter Charge | Total Charges |
|----------------------|--------------|--------------|---------------|
| 5/8" x 3/4" Meter | \$385 | \$135 | \$520 |
| 3/4" Meter | \$385 | \$215 | \$600 |
| 1" Meter | \$435 | \$255 | \$690 |
| 1-1/2" Meter | \$470 | \$465 | \$935 |
| 2" Turbine Meter | \$630 | \$965 | \$1,595 |
| 2" Compound Meter | \$630 | \$1,690 | \$2,320 |
| 3" Turbine Meter | \$805 | \$1,470 | \$2,275 |
| 3" Compound Meter | \$845 | \$2,265 | \$3,110 |
| 4" Turbine Meter | \$1,170 | \$2,350 | \$3,520 |
| 4" Compound Meter | \$1,230 | \$3,245 | \$4,475 |
| 6" Turbine Meter | \$1,730 | \$4,455 | \$6,185 |
| 6" Compound Meter | \$1,770 | \$6,280 | \$8,050 |
| 8" and Larger Meters | At Cost | At Cost | At Cost |

Off-Site Facilities Hook-Up Fees:

Current and Proposed Charge

| | |
|---------------|-----------|
| 5/8 x 3/4" | \$2,900 |
| 3/4" | \$2,900 |
| 1" | \$2,900 |
| 1-1/2" | \$14,000 |
| 2" | \$22,400 |
| 3" | \$42,000 |
| 4" | \$70,000 |
| 6" | \$140,000 |
| 8" | \$224,000 |
| 10" or larger | \$322,000 |

Off-Site Facilities Hook-Up Fees:

| Service Lateral Size | Current and Proposed |
|----------------------|----------------------|
| 4" | \$3,900 |
| 6" | \$8,775 |
| 8" or larger | \$15,600 |

THE VALUE OF WATER

Water is the only essential utility service, and one of the most affordable. Most Americans spend more on lattes – \$1,100 a year – than they do on their water service every year. On average, water bills are less than 1% of a consumer's household income.

HELPING YOU SAVE

In Arizona, the average home uses 7,000 gallons of water each month. We know every customer is unique – some people use less, some use more – that's why we offer programs that can help.



Conservation Specialists

Free resources on epcor.com and our Conservation Specialists can help you find ways to save.



Low Income

Customers with household incomes of 200% or less of the Federal poverty guideline can receive \$10 off their monthly water and wastewater bill.



Deployed Service Members

EPCOR waives the monthly water and wastewater bill for active-duty service members deployed away from their homes and who meet the program's eligibility requirements. Proof of deployment is required.



Disabled Veterans

Veterans disabled through military service can get \$10 off their monthly water and wastewater bill. Proof such as a Veterans Identification Card is required.

Visit epcor.com, call 1.800.383.0834 or email mywater@epcor.com about these resources and more.