

Bylaw 20865 EPCOR Wastewater Services Bylaw Code of Practice

Flow Monitoring Point Installation & Maintenance Requirements

APPROVED:

Abhishek Bhargava, Acting Director, Linear Asset Operations

April 1, 2025

This Code of Practice, adopted by EPCOR Water Services Inc. (EWSI), contains written requirements, standards, specifications, procedures, protocols or guidelines that form part of the Wastewater Collection Services Guidelines. Pursuant to the Terms and Conditions of Wastewater Collection and Wastewater Treatment Services ("Terms and Conditions") attached as Schedule 2 to Bylaw 20865: EPCOR Wastewater Services Bylaw approved by the City of Edmonton, as EPCOR Water Services Inc.'s regulator, the Terms and Conditions and the Wastewater Collection Services Guidelines are binding on all Customers.

Schedule 2, s. 2.3(d)

1.0 Application

- 1.1 Pursuant to Bylaw 20865, the customer or owner of a premises serviced by the sewerage system shall install and maintain an accessible flow monitoring point on each pipe leaving the property:
- (a) when the pipe is new;
 - (b) when the premises is redeveloped; or
 - (d) when required to do so by EWSI.
- Schedule 2, s. 4.3(a)
- 1.2 The owner of a premises shall ensure that EWSI has a safe and reasonable means of accessing the flow monitoring point.
- Schedule 2, s. 4.3(c)
- 1.3 This does not apply to:
- (a) single-family or duplex properties discharging only wastewater from domestic sources; or
 - (b) minor redevelopments exempted by EWSI.
- Schedule 2, s. 4.3(d)
- 1.4 All required flow monitoring points must be constructed and maintained in accordance with this Code of Practice provided in the Wastewater Collections Services Guidelines established by EWSI.
- Schedule 2, s. 4.3(b)
- 1.5 Nothing in this Code of Practice exempts a person from the requirements, penalties and/or liabilities within all applicable municipal, provincial, or federal legislation or standards.

2.0 Installation Requirements

- 2.1 An acceptable flow monitoring point is a standard manhole having a minimum 1200 mm diameter. See ATTACHMENT A, reproduced from EPCOR Design and Construction Standards for the City of Edmonton – Volume 3 Drainage for technical drawings.
- 2.2 The collar and cover for the flow monitoring point shall not exceed 200 mm above or 100 mm below grade.
- 2.3 Flow monitoring points shall be installed within the property lines or boundaries from where the wastewater originates.
- 2.4 If space limitations will not allow the installation of a standard 1200 mm flow monitoring point then alternative plans may be submitted to EWSI for consideration. These alternative plans may include a 900 mm flow monitoring point or dipwell (standpipe) which is a vertical pipe that extends from a sewer pipe for purpose of obtaining a wastewater sample.
- 2.5 A dipwell (standpipe) must meet the following criteria:
- (a) EWSI must be able to view the flow;
 - (b) it must have a minimum diameter of 150 mm (6 inches);
 - (c) it must have a removable cap; and

(d) it must have a sheltered and tamper proof enclosure to accommodate both automated sampling and/or flow monitoring equipment.

3.0 Maintenance Requirements

- 3.1 The sewer pipe at the base of the flow monitoring point must be exposed (open) to the wastewater flow.
- 3.2 The flow monitoring point must be benched where the surface contouring at the base of a flow monitoring point will confine the flow of sewage to avoid the accumulation of deposits.
- 3.3 The flow monitoring point must be free of obstructions and prohibited wastes (as defined in Bylaw 20865, Schedule 2, Appendix A and C) at all times.
- 3.4 The manhole collars and covers must be aligned with the interior walls or cone at all times.

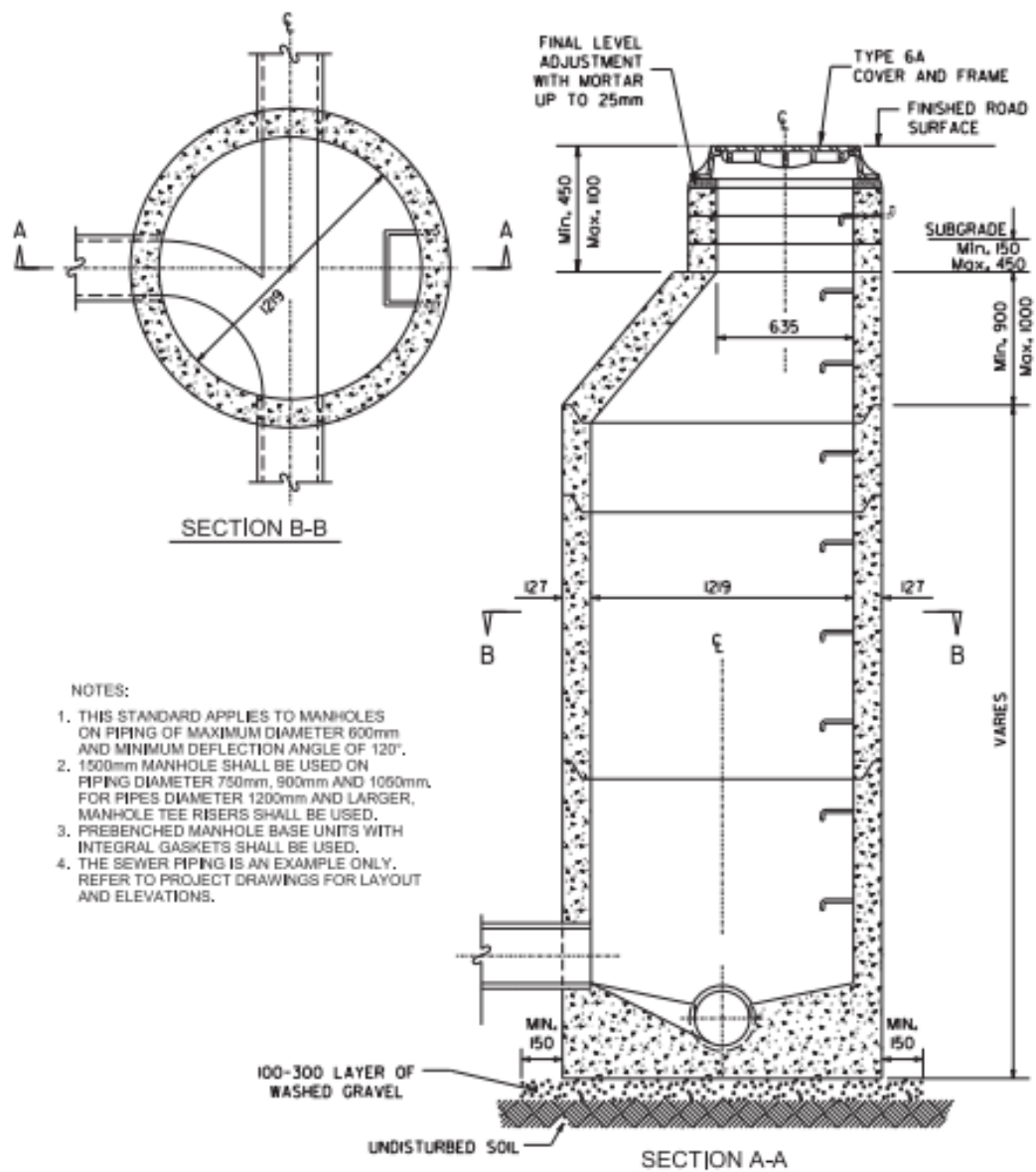


Intentional blank page



PROVIDING MORE

ATTACHMENT A



ALL DIMENSIONS ARE IN MILLIMETERS
UNLESS OTHERWISE NOTED.

EPCOR

STANDARD 1200 MANHOLE FOR PIPING UP TO 600mm DIAMETER WITH TYPE 6A COVER AND FRAME

DATE APPROVED
OCTOBER 2021

DRAWN BY
JL

APPROVED

Shee

DRAWING NUMBER
DR-06-17-09

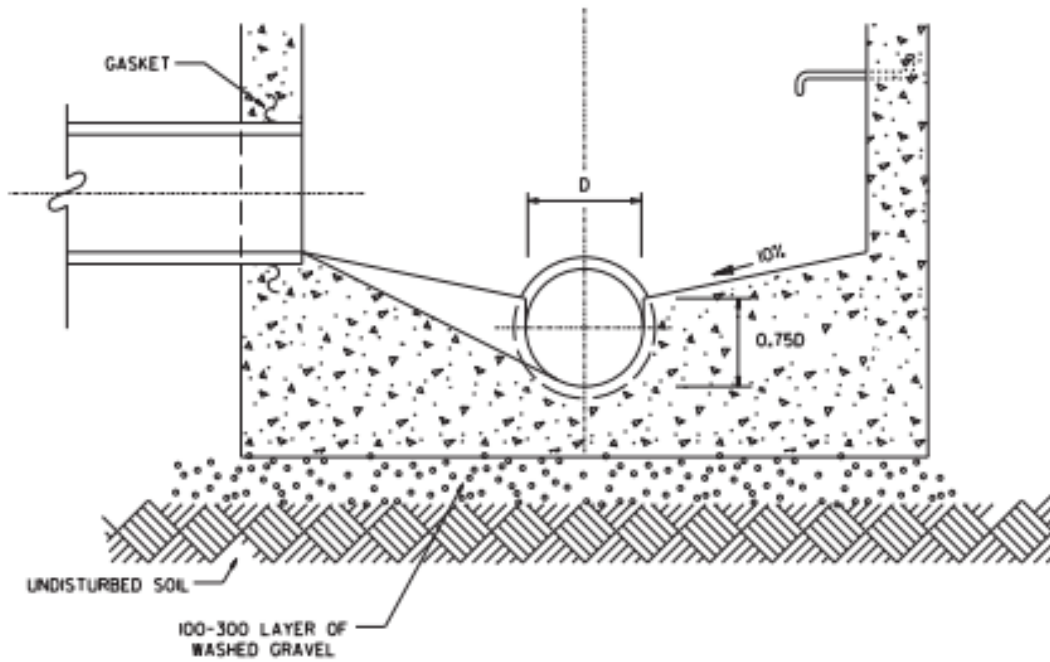
SCALE
NTS

CHECKED BY
SK

OLD DRAWING NUMBER
7013

Found on page 126 of Vol. 3-06 Construction Specifications and Standard Drawings.

Bylaw 20865 - EPCOR Wastewater Services Bylaw
Code of Practice – Flow Monitoring Point Installation Requirements



ALL DIMENSIONS ARE IN MILLIMETERS
UNLESS OTHERWISE NOTED.

BENCHING DETAIL FOR STANDARD 1200 MANHOLE

DATE APPROVED
OCTOBER 2021

DRAWN BY
JL

APPROVED

Shree

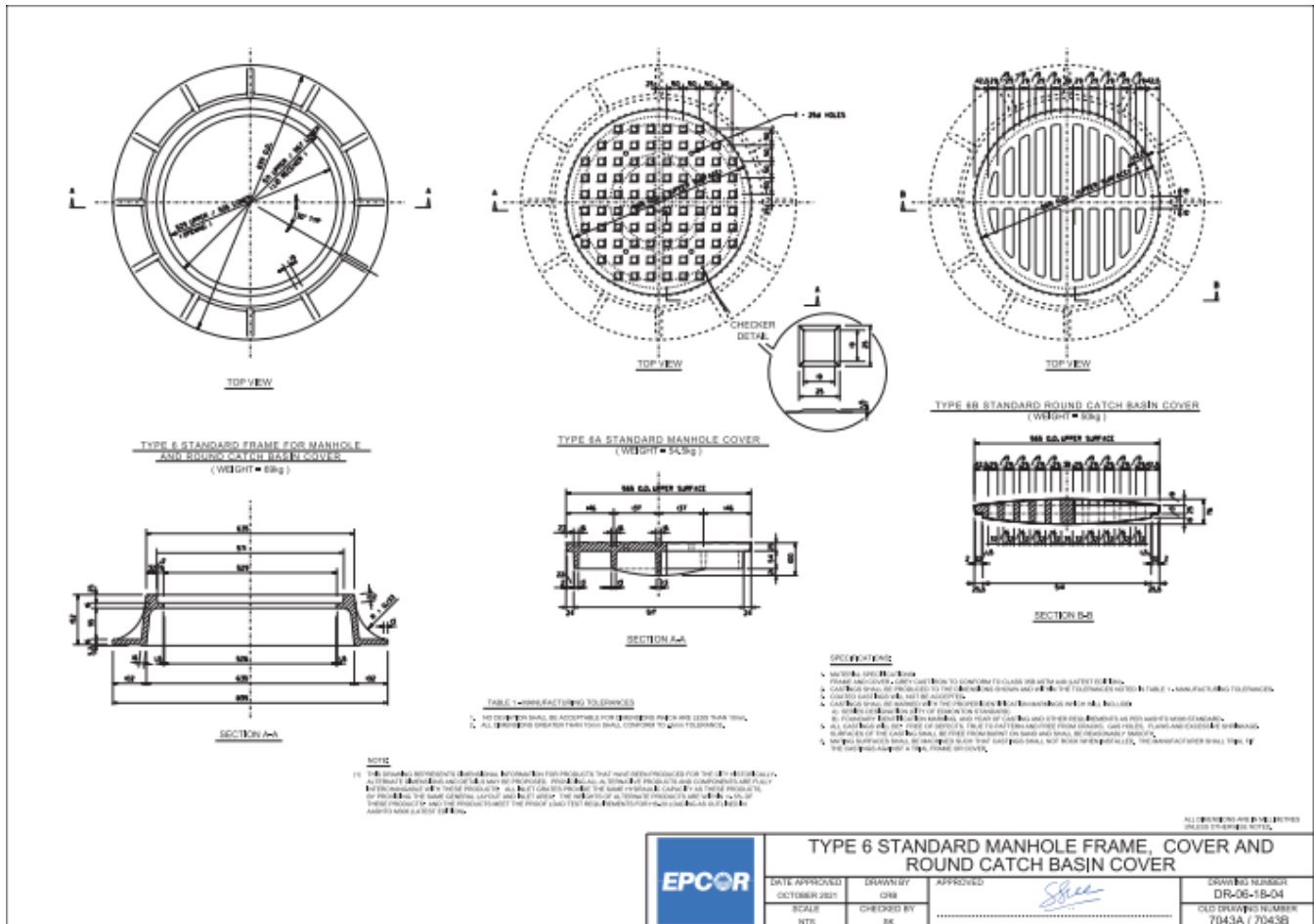
DRAWING NUMBER
DR-06-17-11

SCALE
NTS

CHECKED BY
SK

OLD DRAWING NUMBER
7020

Found on page 128 of Vol. 3-06 Construction Specifications and Standard Drawings.



Found on page 138 of Vol. 3-06 Construction Specifications and Standard Drawings.