

PROJECT UPDATE

Lauderdale Flood Mitigation Project

OCTOBER 2025

PUBLIC INFORMATION SESSION

Join us to learn more about the Lauderdale Dry Pond construction:

When: Thursday, October 16 from
6:00 p.m. - 8:00 p.m.

Where: Lauderdale School (10610 129 Ave NW)
For access to the school for this event, please
use the door located next to the parking lot.

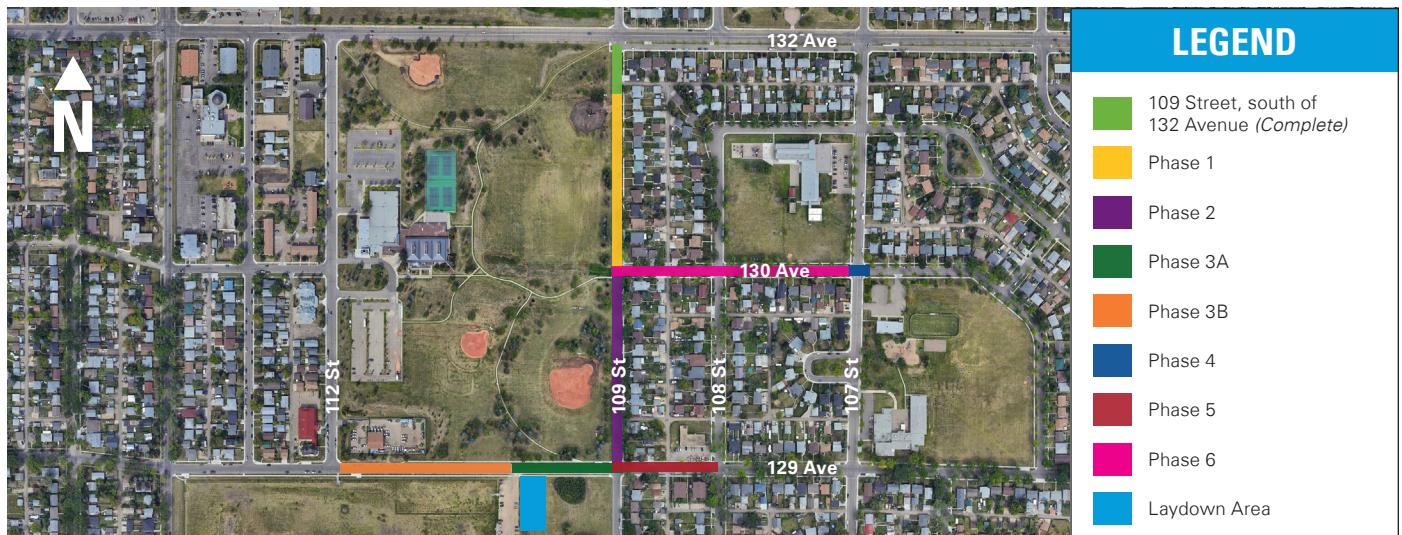
We recognize the importance of the Grand Trunk Off-Leash Dog Park to the Lauderdale community and dog park users, as the off-leash dog park allows owners and their dogs to spend time together and allows dogs a space for play and socialization. EPCOR is committed to an engagement approach that provides project transparency, a process to manage any questions or issues, and providing meaningful communication to residents.

PROJECT UPDATE

Since the last project update in March 2025, EPCOR has completed several sewer upgrades within the neighbourhood. Construction is progressing and all Stage 1 sewer upgrades are expected to be complete in late October 2025.

- **Phase 1** – Work is now complete and the road has reopened; crews will be completing landscaping restorations as necessary.
- **Phase 2** – Work is now complete and the road has reopened; crews will be completing landscaping restorations as necessary.
- **Phase 3A** – Work is now complete.
- **Phase 3B** – Work is now complete and the road has reopened; crews will be completing landscaping restorations as necessary.
- **Phase 4** – Work is complete; residents can expect crews to complete minor restoration while the road remains open.
- **Phase 5** – Work is now complete and the road has reopened; crews will be completing landscaping restorations as necessary.
- **Phase 6** – Road is expected to open in late October.

STAGE 1B SEWER UPGRADES MAP



Public Washrooms

EPCOR will be constructing public washrooms next to the Grand Trunk Off-Leash Dog Park. The City of Edmonton will manage the ongoing operations of the washrooms once the facility’s construction is complete. More information will be provided as this work progresses.

UPCOMING STAGES OF WORK

Tree Trimming, Removal and Replacement

In advance of dry pond construction, trees conflicting with the work area will be removed in accordance to the City of Edmonton’s Corporate Tree Management Policy. The value collected for the removal of these trees will be directed towards urban tree canopy growth, preservation, and protection. **Tree removals are expected to be completed the week of October 13.**

EPCOR has consulted with the City of Edmonton Urban Forestry department regarding the impacts to the trees and vegetation and removal/ trimming will only be done where absolutely necessary.

Utility Relocations

Prior to upgrade work beginning on 127 Avenue, utilities including water, telecom and gas lines will be relocated. You may observe additional activities in the area as crews perform utility locates using hydrovac.

Dry Pond Construction
(November 2025 to July 2026)

The final dry pond design has been approved by the City of Edmonton and construction is anticipated to begin in early November 2025. More information about the construction work will be shared with residents in advance of work beginning.

A large area of the green space in the Grand Trunk Off-Leash Dog Park will be used during the construction of the dry pond. Residents and dog owners will still be able to access the park, but areas under construction will be fenced off for safety. The fence around the outside of the off-leash dog park will stay in place. The small dog park will remain accessible from the parking lot. The large dog use area will be accessible from the west side of the park.

Once construction and landscaping have been completed, the Grand Trunk Off-Leash Dog Park will return to its existing size and the dry pond area will be used as part of the fenced dog park. Following the construction and warranty period for the dry pond, the City of Edmonton will take over responsibility for maintenance of the dry pond surface, vegetation and amenities. EPCOR will continue to maintain the underground drainage infrastructure.

Stage 2: Combined Sewer Upgrades
(November 2025 to fall 2026)

A portion of the combined sewer will be upgraded using microtunneling. Micro-tunneling is a method used to construct new drainage tunnels. First, a large shaft is built, which will facilitate lowering of a micro-tunnel boring machine (TBM) into the ground. The TBM then grinds through soil and rocks/boulders underground along the alignment of the new tunnel. Pipe is then pushed behind the micro-tunneling machine to create the new tunnel.

The tunneling process occurs underground, however, two shafts are required at the surface along the alignment of the tunnel. These shafts are placed at engineered start and end points. Due to the size of the shaft locations, impacts usually include road/sidewalk closures.

The TBM used to tunnel underground operates under a pressure system to move forward. When stopped, the machine requires force to push it forward when tunneling resumes. A delayed stoppage could result in a situation where the TBM gets stuck and is unable to move forward. **24 hours a day, 7 days a week (24/7) tunneling work is required to reduce this risk.**

Stage 2: Storm Infrastructure Sewer Upgrades
(spring 2026 to summer 2027)

A portion of the storm infrastructure will be completed using of open trench construction.

During each phase of the open-trench construction, a portion of the road and asphalt will be removed first. A portion of the curb, sidewalks and front facing driveways may be removed in order to accommodate the worksite. Next, the area will be excavated and pipe will be installed. Finally, the area will be backfilled and restored.

Stage 3: Pipe Decommissioning (summer 2027)

During this work, a portion of pipe that runs underneath the CN Rail yard will be decommissioned.

More information about future stages of work will be provided to residents prior to work beginning, and will include details about the final location of the tunneling worksite

ABOUT LOW IMPACT DEVELOPMENT

LID installations incorporate plants, soils and natural processes to capture stormwater runoff. Stormwater enters the LID installation and flows into the soil layer with the ability to capture, and filter stormwater.

For more information about EPCOR's LID program, visit epcor.com/LID



PROJECT OVERVIEW

The Lauderdale Flood Mitigation Project has been initiated to lower the risk of flooding in Lauderdale and the surrounding neighbourhoods. Stormwater management facilities, like dry ponds and low impact development, are built to catch excess water runoff during heavy storms and when snow melts. Stormwater management facilities play a big role in keeping our neighbourhoods safe from flooding.

There is no stormwater management facility in the Lauderdale neighbourhood and the current surface drainage system is not sufficient. There are several areas in this neighbourhood at lower elevation where water pools, putting the Lauderdale community at risk of flooding during storms.

To reduce the risk of flooding, EPCOR is constructing a dry pond in the Grand Trunk Off-Leash Dog Park and upgrading the drainage infrastructure across the neighbourhood. Dry ponds are green spaces that temporarily hold excess water during severe storms to help protect residents and businesses from flooding.

The stormwater drains from the dry pond into the drainage system when there is capacity. Dry ponds are dry the vast majority of the time. The Lauderdale Flood Mitigation project is in the construction phase and is part of EPCOR’s Stormwater Integrated Resource Plan (SIRP) to reduce the risk of flooding in Edmonton neighbourhoods. SIRP is funded in part by the Government of Canada’s Disaster Mitigation and Adaptation Fund.

OVERALL PROJECT SCHEDULE

The project will be completed in two parts:

- Storm sewer construction began in July 2024. All sewer upgrade work is anticipated to be completed in 2027.
- Dry pond construction is anticipated to begin in early November 2025. Landscaping restoration is expected to be complete in July 2026. The construction area will remain fenced to allow the landscaping to establish and will reopen to users once final approvals have been received from the City.

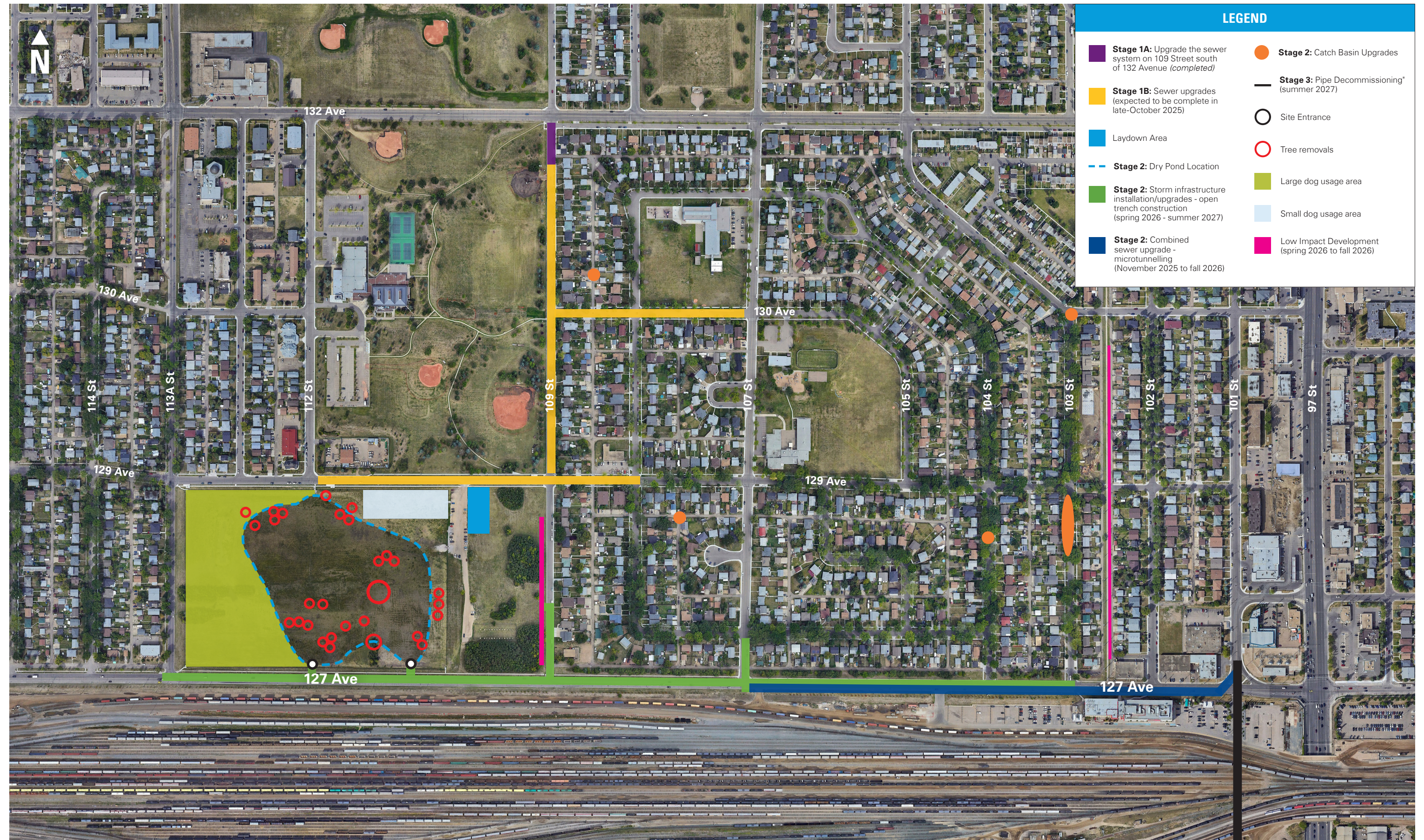
Portions of the park that are not required for construction staging or construction of the pond will remain open.

Please note, these timelines are estimates pending internal approvals, permitting, construction conditions, and weather.

APPROVED DRY POND LAYOUT



OVERALL PROJECT MAP



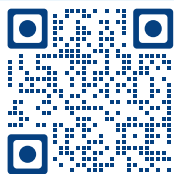


HELP SHAPE EDMONTON'S WATER UTILITIES FOR YEARS TO COME!

Whether it's rates, reliability, or growth that is most important to you, your feedback helps to inform EPCOR's next four-year water priorities. This feedback helps us determine the rates we charge and how we operate, maintain, and upgrade our systems.

Scan the QR code to take the open survey now and tell us what's important to you. It only takes a few minutes, and your feedback helps guide decisions that impact your community.

Survey open from September 25 to October 23, 2025.



For more information about EPCOR's Water Utility Priorities, visit our website at epcor.com/waterplan

MORE INFORMATION

EPCOR Water Services

Phone: 780-412-4200

E-mail: EPCORprojects@epcor.com

Visit: epcor.com/Lauderdale

This project is funded in part by the Government of Canada.